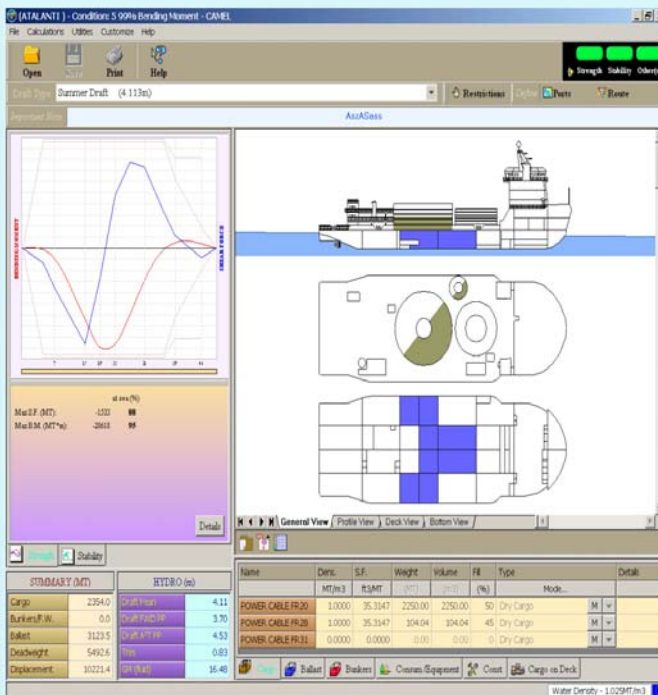


C.A.M.E.L. © v1.5.00 - 1997-2013

Computerized Advanced Marine Engineering Loading

Cable - Vessel

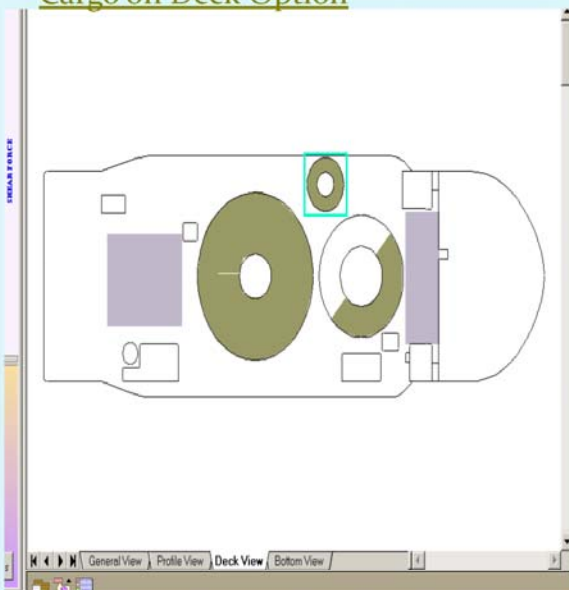
One screen covers the entire program



Standards functions for Multi purpose

- Hydrostatic information table(Draft, trim, LCB...)
- Intact Stability information table-IMO Criteria
- Weather Criteria information table
- Longitudinal Strength calculation table(S.F., B.M)
- Summary of cargoes information table
- Forward draft limit
- Calculation of Propeller immersion
- Load Line selection(Summer, Winter, Tropical...)
- Restrictions(Draft, Trim, S.F., B.M., Air Draft)
- Automatic unit conversion(Metric-British)
- Water density calculation
- Actual loading graph of the vessel
- On line help and error/warning messages
- Explorer to manage loading conditions(copy, paste, recycle bin, directories....)
- Import-Export loading conditions
- Reporting facilities(Print out tables and graphs)

Cargo on Deck Option



Optional utilities for Multi-purpose

- Ballast Water Management module;
- Display and printout Draft Survey Report;
- Auto-Trim module;
- Damage Stability Calculation - Direct damage assessments;
- Grounding/ Refloating calculation