



CAMEL for Windows

Programme overview – CAMEL Loading software is a comprehensive Stress and Stability package. Designed by marine experts and written with the newest software tools, it is a powerful and at the same time very user-friendly program. Cargo planning is carried out with instant response to any change in loading or tank conditions.

Stability criteria and stress analysis are calculated in accordance with Classification Societies requirements. Special features include Damage Stability. CAMEL for Windows can run on any Windows PC system.

Optional Features include:

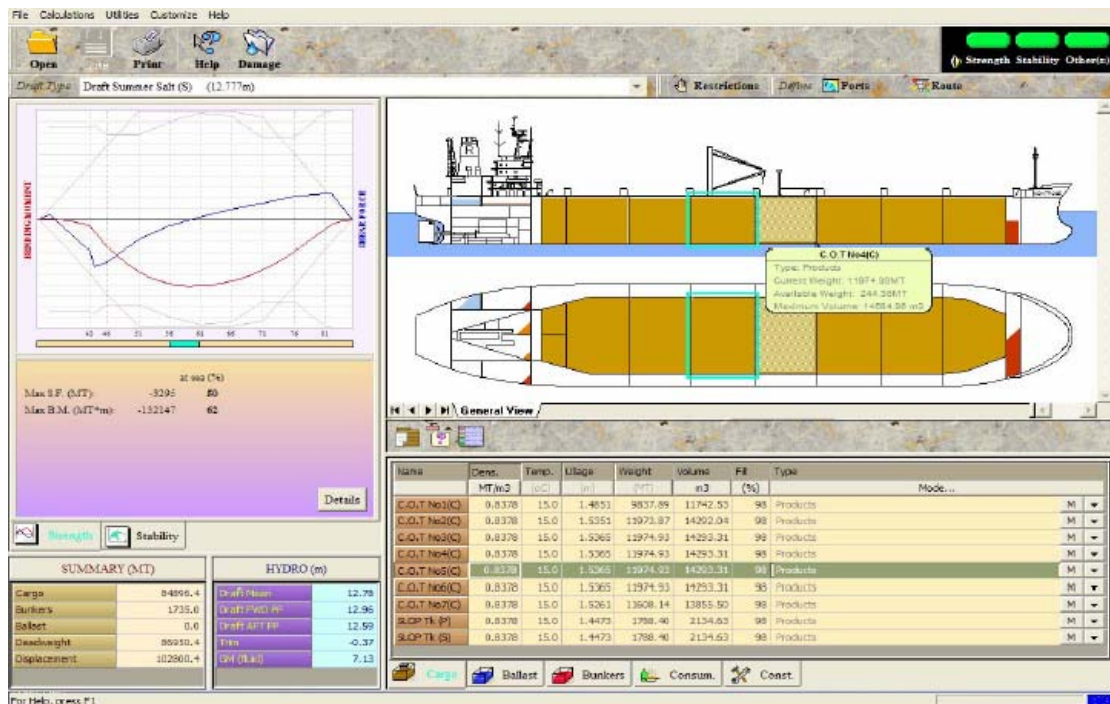
AUTOTRIM - Automatic trim adjustment

BALLAST MANAGEMENT PLAN MODULE

ULLAGE/SOUND REPORT - after loading/Before Discharging

DAMAGE STABILITY CALCULATIONS

GROUNDING/RE-FLOATING CALCULATIONS



Main features –

Full calculation of stability, draft and list criteria.

Hydrostatic information table (Draft, Trim, LCB, GM etc)

Stability Information table - IMO criteria

Longitudinal Strength calculations (S.F. & B.M.)

Type Approved By DNV


Graphs of Loading, Longitudinal Strength, Stability

Propeller immersion

Load Line selection (Summer, Winter, Tropical etc)

Restrictions (Draft, Trim, Shear force & Bending Moments, Air Draft)

Water Density calculations



BALLAST WATER REPORTING FORM
Commonwealth of Australia Quarantine Act 1938

● TO BE COMPLETED BY ALL VESSELS >25 METRES AND TO BE FORWARDED TO AQIS PRIOR TO VESSEL'S FIRST PORT ARRIVAL.

● MUST ACCOMPANY AQIS QUARANTINE DECLARATION FOR VESSELS FORM.

1. VESSEL INFORMATION

Name: DEMOTANKER	IMO No: 77711111	Arrival Date:
Type: TANKER	GT:	Arrival Port:
Manager:	Agent:	Next Port:

2. BALLAST WATER

Total ballast on board (in Tons): 30 637.70	(i) Port:	Country:	Date:
Total ballast capacity (in Tons): 39 102.54	(ii) Port:	Country:	Date:
Total number of Ballast Tanks: 16	(iii) Port:	Country:	Date:

3. Last Three (3) Ports and Countries of Ballast Water Uptake (most recent at (i)):

4. DO YOU INTEND DISCHARGING ANY BALLAST WATER IN AN AUSTRALIAN PORT? (Tick the box) YES – refer to questions: 1, 2, 3, 5, 6 & 7 NO – refer to: 1, 2, 3 & 7

5. BALLAST WATER HISTORY: RECORD ALL TANKS THAT WILL BE DISCHARGED IN PORTS FOR CURRENT VOYAGE

Tanks / Holds (List multiple Tanks / Sources separately)	BW SOURCE			BW EXCHANGE:			Empty / Full or		Flow Through			BW DISCHARGE		
	Date of uptake (DD/MM/YY)	Last Port of Uptake OR Latitude & Longitude	Volume Taken up (Tons)	Date of Exchange (DD/MM/YY)	Start Point (Latitude & Longitude)	End Point (Latitude & Longitude)	Volume Exchange (Tons)	% Disch	Port of Discharge	Date Discharge (DD/MM/YY)	Volume of Discharge (MT)			
FORE PEAK Tc (C)			1 652				1 652	100			1 652			
M/W B 7 Aw1 (P)			2 337				2 337	100			2 337			
M/W B 7 Aw1 (S)			2 337				0	0			2 337			
M/W B 7 Aw2 (P)			2 245				2 245	100			2 245			
M/W B 7 Aw2 (S)			2 245				2 245	100			2 245			
M/W B 7 Aw3 (P)			2 341				2 341	100			2 341			
M/W B 7 Aw3 (S)			2 341				2 341	100			2 341			
M/W B 7 Aw4 (P)			2 342				2 342	100			2 342			
M/W B 7 Aw4 (S)			2 342				2 342	100			2 342			
M/W B 7 Aw5 (P)			2 341				2 341	100			2 341			
M/W B 7 Aw5 (S)			2 341				2 341	100			2 341			
M/W B 7 Aw6 (P)			2 274				2 274	100			2 274			
M/W B 7 Aw6 (S)			2 274				2 274	100			2 274			
M/W B 7 Aw7 (P)			3 528				3 528	100			3 528			
M/W B 7 Aw7 (S)			3 528				3 528	100			3 528			
AFTER PEAK Tc (C)			603				603	100			603			

6. IF EXCHANGES WERE NOT CONDUCTED IN ANY OF THE TANKS/HOLDS LISTED ABOVE, PLEASE STATE REASON WHY NOT:

7. BALLAST WATER MANAGEMENT PLAN ON BOARD? (Tick the box) YES NO **HAS THIS BEEN IMPLEMENTED? (Tick the box)** YES NO

RESPONSIBLE OFFICER'S NAME AND TITLE (PRINTED) AND SIGNATURE: _____ DATE: ____/____/____

Note: Masters (or Delegated Officers) who willfully make a false statement, may be liable to a significant fine and/or imprisonment under Local Law.

An example of the Ballast Management report

Benefits

- **Class Approved**
- **Full calculation of required criteria**
- **Online information for each cargo**
- **Separate modules for Tankers, Bulk Carriers or Containerships**
- **Load Line selection**