

Yacht Manager

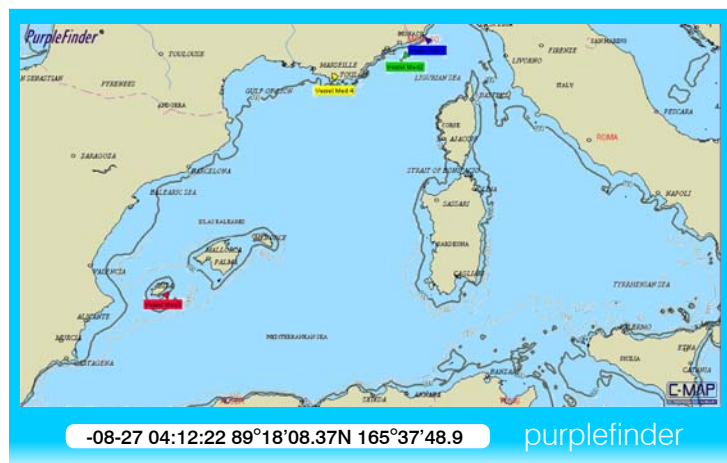
The ultimate tracking and management system for professional yacht managers, suitable for fleets of yachts of all types anywhere in the world.

Pole Star's Yacht Manager is a powerful web-based system that allows you to automatically track vessels in real time from the shore via an internet enabled pc or via SMS to your mobile phone.

It enables you to track yacht movements to establish exact location, speed and heading; to assess the weather and sea conditions that may affect a vessel's voyage; and to monitor the safe passage of a vessel through dangerous or sensitive areas.

Key features

- Variable user-defined position reporting frequency from one per day to every 10 minutes
- Poll a vessel to receive immediate position report
- View entire fleet, group or single vessel on C-Map™ charts with zoom & pan functionality
- View Fleet List for data on your entire fleet, group or a single vessel
- Weather forecasting including storm, cyclone, swell height & wind speed information
- Track actual progress of vessel against planned voyage
- Set geo-zones to define high-risk areas and be notified when a vessel reports from that zone
- Voyage history logged and available for review
- Flexible "pay as you go" credits payment system



Via 
inmarsat

Powered by
Purplefinder 

Yacht Manager V1.1 2007-05-10

Hardware options

If a dedicated transceiver is required, you can use Pole Star's YM1, a covert Inmarsat D+ transceiver that is simple to install onboard any yacht. Alternatively, the system can operate from an Inmarsat C transceiver if one is already fitted on the yacht.

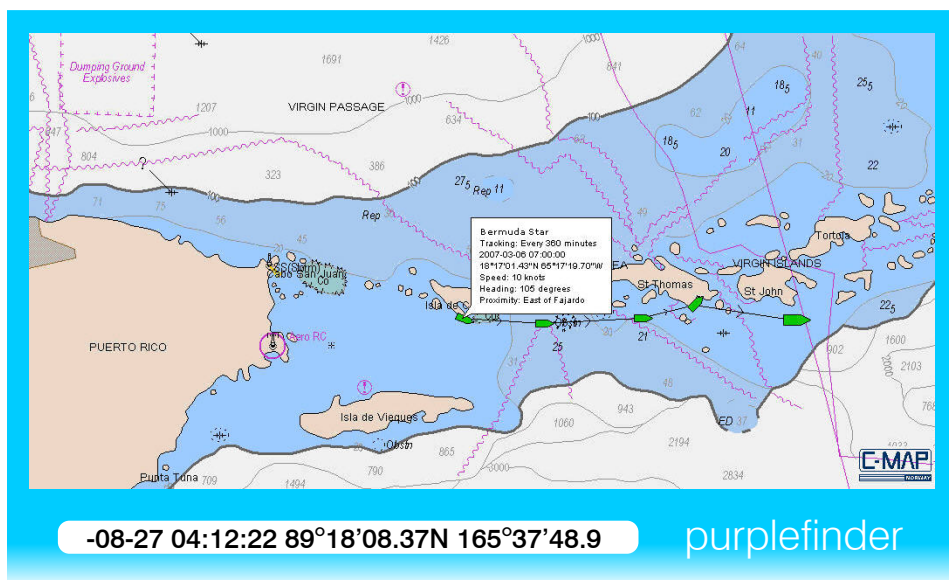


Using Yacht Manager

Position reporting for routine tracking

Automatic Position Reports (APRs) are set at a default frequency of four per day to keep you informed of a vessel's progress. Reports include date and time, lat/long, and speed and heading displayed on interactive charts together with the latest meteorological forecasts (wind, wave, swell etc) if required.

The data is automatically displayed in on your Fleet List, the Fleet Map, which shows the entire fleet and the Asset Map for the individual vessel. You can programme APRs to be sent via email and/or SMS so you and your colleagues can be kept fully informed, even when you are not in the office.



The Asset Map shows a vessel's voyage history.

Variable reporting frequency

You can change the reporting frequency of Automatic Position Reports for each vessel, as circumstances require, by resetting the reporting interval.

For example, if a yacht is heading towards a sensitive area or sailing into adverse weather conditions, you can send a command to increase reporting frequency to up to every 10 minutes to enable you to monitor progress more closely. Once the yacht is back in a safe area or in calmer seas, you can send a second command to reset the reporting interval back to four per day.

Voyage monitoring

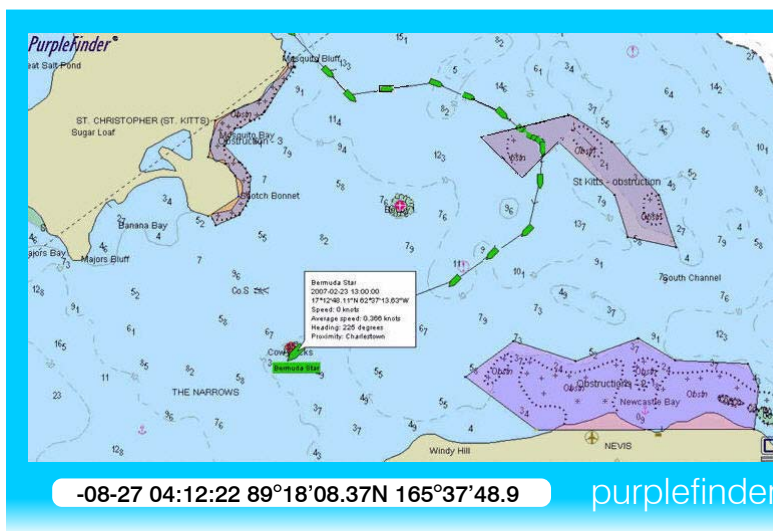
This is an essential feature for any Yacht Manager who is required to operate to a certain schedule.

By creating waypoints for a voyage with specified dates and times of arrival/departure, the actual progress of the vessel can be assessed against the scheduled voyage. You will be notified of any deviation by a colour change in the vessel icon displayed on the maps. You can then either contact the yacht to find out the reason for the deviation or wait for the next Automatic Position Report for a further progress report.

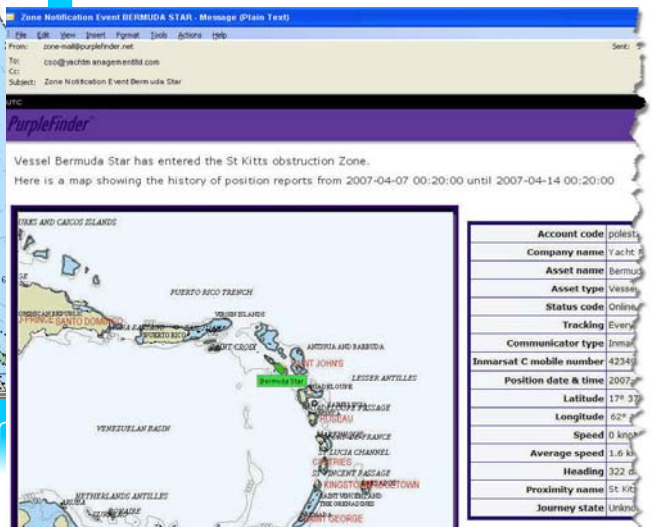
Geo-zones

Geo-zones can be created to define areas of high-risk (reefs, shallows) or sensitive (environmentally protected) areas which are displayed on the Fleet Map and on the Asset Map. To be kept informed of yacht movements in the proximity of these areas, you can set up zone notifications. Messages will automatically be sent via email and/or SMS to designated recipients as soon as a vessel sends a report after entering and/or leaving a zone.

For example: One of your yachts is on a week's charter around St Kitts (see below). You have created a geo-zone highlighting a high risk-area and set up a zone notification. When the vessel sends a position report from inside the zone you receive an email notification. You reset the reporting interval to once every 10 minutes to monitor the situation and you call the vessel instructing the charterer to move south away from the area. Once the vessel leaves the zone you receive another email notification informing you, so you reset the reporting interval back to the original frequency.



A chart showing 3 geo-zones



A zone notification email

Meteorological forecasts

Yacht Manager enables you to choose meteorological forecasts to suit your requirements and ensure the safety of your fleet. To do this, you select a timeframe (from 12 hours ahead to 10 days ahead) and meteorological parameter (choose from wind speed and direction, swell wave direction/height etc) and display this as a graphical overlay on the map. Clicking on a specific point will display further data to enable you to assess the weather or sea conditions affecting the current voyage. You can also view cyclone information in graphical and text format in the same way.

Charges

Usage	Credit charge
Receive a position report	1
Request a position report (poll)	5
Set reporting interval	8
Inmarsat C messaging per 32 characters	3
Receive a position report/warning by SMS	3
Daily service charge	6

There is a one-off fee for registering a transceiver on the Pole Star Yacht Manager system. This is not charged again, unless you run out of credits and have to re-register the transceiver. The daily service charge is incurred from the day the transceiver is registered on the Yacht Manager system. Credits can be purchased in packs of 1000, 2000 and 3000. (Typical usage of 4 position reports per day would cost the user 300 credits per month.)

Yacht Manager Feature Matrix

FEATURE

PRICING

Registration	One-off fee for registering a transceiver on the Yacht Manager system
Pay as you go credits system	Allows for flexible usage

HARDWARE OPTIONS

Inmarsat C	Transceiver already installed on the vessel
YM1	Pole Star's D+ transceiver kit, includes mounting bracket and cable

CHARTS

Fleet list	Latest position report data and map for each vessel
Interactive Fleet maps	Position and status of fleet, group or vessel on C-Map™ charts with zoom and pan
Weather Information	10 day meteorological forecast and cyclone information
Geo-zones	Create and display zones to define high-risk or sensitive areas
Points of Interest	Create and display points of interest on your global map

POSITION REPORTING

Automatic Position Report (APR)	A position report sent automatically at a fixed interval set by the user
Set reporting interval	Send command to change the interval between APRs – from one per day to every 10 minutes
Request position report (poll)	Send command to request an immediate position report
Overdue position reports	Receive notification if a vessel has not reported
Position report history	View and download a log of all position reports

TOOLS

Postings	Manually enter extra information to be displayed in a position report
Email/SMS notifications	Send position reports to up to 10 email addresses and 3 mobile phone numbers
Geo-zone notifications	Receive email/SMS warning when vessel reports position in or out of a user-defined zone
Asset groups	Create groups of vessels eg by type, size, owner, region
Voyages	Automatic voyage analysis monitors actual progress of vessel against planned voyage

MESSAGING

Messaging	Messaging to and from the tracked Inmarsat C transceiver
-----------	--

USER SECURITY

Master user	A username and password with full control of the service
Standard users	Ability to create up to 10 logins to provide other users with controlled access to the fleet, eg by type of yacht, fleet base or size of vessel

Most Inmarsat C terminals are supported but users of older terminals are strongly advised to check the hardware compatibility list at www.polestarglobal.com/hcl.html before purchasing the Pole Star Yacht Management service.

*Pole Star will use reasonable endeavours to track your transceiver and deliver your position reports. However sometimes this is not possible due to factors beyond our control, such as satellite communications failure.



Europe, Middle East, Africa, USA

+44 20 7313 7402 | sales@purplefinder.com

Asia Pacific

+852 2297 2306 | sales@purplefinder.com